

# Epiphany Youth Night

## You Will Need:

A designated room with a door

Bible the teens can use to look up the clues

Books (for diversion)

Double Sided Silicone Tape (Amazon

[https://www.amazon.com/gp/product/B0816D7B2V/ref=ppx\\_yo\\_dt\\_b\\_asin\\_title\\_o03\\_s01?ie=UTF8&psc=1](https://www.amazon.com/gp/product/B0816D7B2V/ref=ppx_yo_dt_b_asin_title_o03_s01?ie=UTF8&psc=1))

Metal fasteners (Amazon

[https://www.amazon.com/gp/product/B07JFZ2NRN/ref=ppx\\_yo\\_dt\\_b\\_asin\\_title\\_o03\\_s01?ie=UTF8&psc=1](https://www.amazon.com/gp/product/B07JFZ2NRN/ref=ppx_yo_dt_b_asin_title_o03_s01?ie=UTF8&psc=1))

Magi Puzzle – Print from below

Box or lunchbox that can be locked with one of the combination locks (I used a soft one with 2 zippers)

Another box that can be locked

Fake plants (for diversion)

Statue or picture of Mary

Dove picture or poster

Baby Jesus (I used a resin one from a nativity set)

Map of Egypt (or Fire Evacuation Plans work, too!)

Candle in a jar or container

Lock with a key

Two 4-Didget number Locks

One 4-Didget word lock

Book Safe with key (There are several types, I have a Dictionary and a Bible one, but you will just need one)

Current pocket calendar with nothing written in it.

Flashlights

Plastic cover for light switch, or use a thermostat cover with a lock (I used a plastic take out container and cut a door in it and put holes on each side)

Pens

Wrapping Paper (it helps to pre-cut the paper to the right size, each student will need a piece for their Epiphany boxes)

Tape (have a few rolls available)

Standard balloons (enough for each student to have 2 and extras in case you have some pop during inflation)

Curling ribbon

Scissors (for cutting the ribbon and to remove the ribbon after the game)

## Set Up:

Print out Magi picture on thick cardstock. The verse should be printed on the back. Cut the cardstock on the blue lines on the verse side. This will be the puzzle.

Print the phone keypad decipher. You may want a few copies just in case it gets ruined.

Print Out the Bible Verses and cut them apart. You should only need 1 set (4 are provided) but you will want backups during the youth night in case they get lost or damaged.

Mark the pocket calendar with “Epiphany” in red and circle it on the correct date. Make sure there is nothing else printed in the calendar or it will be too confusing.

To set up the door lock, attach the lock to both sides of the hardware so you know how close they will need to be to make the lock fit. Using the double-sided silicone tape, cut 2 pieces the size of the flat part of the hardware and attach the hardware to the door and door jam. This tape is pretty strong and should hold up through the 3 groups (I used it for 10 rounds over a week and it stayed on). However, if an emergency arises, it can be pulled off with some force. Have extra tape available in case they get ruined.

Hang a picture or poster of a dove and the map of Egypt somewhere in the room.

Place Mary, Baby Jesus, the fake plants, and the candle randomly around the room.

Put the books and book safe together on a shelf or table

Have a Bible handy for the students to look up the Bible verse clues

Set up the Escape Room as designated below

Print out the Epiphany Gifts instructions

It would be good to have a volunteer who is good with interacting with the students for this activity

Print out the "My Gift to You!" slips and cut apart. Each student will need one

Print the box template on cardstock or thick paper. Each student will need one of these. Depending on the maturity of your group and the time you have available, you can either cut the paper in half and let the students cut out their own template or have the templates cut out ahead of time.

Print out the labels on cardstock and cut apart. Each student will need a label for their Epiphany gift.

Blow the balloons up to normal size. Tie a ribbon to each balloon making sure there is enough string to tie one end around a student's ankle and the balloon can still flow. 2-3 feet would be good.

# Epiphany Agenda

## **Prayer:**

Dear Jesus, thank you for coming to earth as a baby and becoming a man. Thank you for going to the cross to be the sacrifice to make me right with God. Help me this New Year to be a living sacrifice for you in all the things that I say and do. May the words of my mouth and the meditations of my heart be acceptable in your sight, O Lord, my Rock and my Redeemer. Amen."

**Break into Groups:** Break your youth group into 3 smaller groups. Give each group a name "Gold", "Frankincense" and "Myrrh". Rotate the Groups through the following activities. Make sure you have enough volunteers to lead each activity.

**Escape Room:** The leader will need to explain the rules, lock the combination lock on the door, and set a timer. 20 minutes should be enough time to get through the Escape Room. The adult should be locked in the room to keep an eye on the students and to give clues if needed. If your parish requires a second adult, please make sure you have another one available.

Rules:

**Work together to solve the puzzles and search for clues.**

**A Bible will be needed for many of the clues.**

**No phones are allowed in the escape room. Anyone caught using their phone will cause the entire group to have 2 minutes added to their time.**

**You may ask for up to 3 hints. Each hint will count for 30 seconds to be added to your time.**

**Find clues hidden around the room to help you obtain all of the puzzle pieces.**

**The puzzle must be put together entirely before the last clue is revealed and you can escape the room.**

**Epiphany Gifts:** The leader for this activity should be good at interacting with the students and knowledgeable in their faith. Make sure they have all the supplies they need to get through the activity.

**Balloon Pop:** Give each student 2 balloons with ribbons attached. Have them tie the other side of the ribbons around each ankle. They will have 2 balloons tied to each leg. You may need to have extra volunteers to help them get tied on. Have the students spread out around the room. When the adult says "Go" have the students try to pop each other's balloons. The last student with an intact balloon is the King! Help the students cut the ribbons off when you are done.

## Escape Room Set Up

The room will need to be reset each time following these directions:

1. Set the door lock to “S-T-A-R”. Do not lock the door until the group is inside.
2. Set the lock on the small box with the date of this year’s Epiphany (ex: 1-6-22). This box contains the last puzzle piece (marked with a green checkmark).
3. Put a puzzle piece in the pocket calendar marking January and put somewhere in the room.
4. Put the 2 pieces of puzzle with a yellow “+” in the dictionary or Bible safe and put on a shelf with other books.
5. In the lunchbox put a piece of puzzle, the clue **Proverbs 2:6** and a key to the dictionary or Bible. Lock the lunchbox with a 4-digit lock set to “5-6-8-3”.
6. Wherever the lunchbox is hidden, hide the phone key-pad decipher code with **1Corinthians 13:1-13** near it.
7. Hide a puzzle piece behind the dove
8. Hide a puzzle piece and the clue **Luke 3:21-22** under or behind the Map of Egypt (or the Fire Evacuation plan) on the wall
9. Behind or under the statue/picture of Mary hide another puzzle piece and the clue **Matthew 2:13-15**
10. Under the Infant Jesus add another puzzle piece and the clue – **Luke 1:31-38**
11. Hide the remaining puzzle pieces around the room.
12. Using the silicone tape, attach the plastic container or thermostat lock box over the light switch. Add the clue **Isaiah 7:14** into the box, turn out the light, and lock the container with a key lock. (You should only need to tape it up the first time)
13. Hide the key in the candle.

Write the first clue “**John 8:12**” on a whiteboard or chalkboard, or have it displayed someplace easy to see.

This is how it should play out - The lights will be turned out and the students will need to find the key to turn the lights on. Provide them with 1-2 flashlights.

Give the 1<sup>st</sup> clue, which is **John 8:12**. (I wrote this on the whiteboard in our room.)

Key is hidden in the candle. The key opens the lock on the light switch to turn on the light.

Once they unlock the light switch, there will be a puzzle piece and a clue – **Isaiah 7:14** (Prophecy of Jesus).

Under the Infant Jesus will be another puzzle piece and the next clue – **Luke 1:31-38** (Mary says “yes”)

Behind the picture of Mary, there will be another puzzle piece and the next clue – **Matthew 2:13-15** (Escape to Egypt)

A puzzle piece is hidden under the Map of Egypt or Fire Evacuation plan on the wall and the next clue – **Luke 3:21-22** (Baptism)

A Dove is hung on the wall and a puzzle piece will be hidden behind it.

The phone keypad with the clue **1Corinthians 13:1-13** (Love) is hidden somewhere near a lunchbox with a 4-digit lock. The code is LOVE, but needs to be converted to numbers using the keypad. (5-6-8-3)

In the lunchbox there will be another piece of puzzle and the next clue – **Proverbs 2:6** (Knowledge) and a key

In a dictionary or Bible lying on the shelf with other books, there will be a safe that is opened with the key. In the safe there will be 2 puzzle pieces.

A lock box with a combination key will be randomly hidden. Near the box, there will be a calendar with the date January 6<sup>th</sup> marked with “Epiphany.” The code is 1-6-\_\_\_. The box contains the last puzzle piece.

Other pieces of the puzzle are easily found about the room.

The puzzle, once put together, will have a picture of the Magi on one side and **Matthew 2:1-2** (Magi searching for Jesus) with the “star” as “\_\_\_” on the other side. The lock to the outside will need to spell out “STAR” to open.

The students will be looking for clues all around the room and will likely go out of order. This is totally normal and expected. Some of the groups may even skip steps if they are lucky enough to figure things out without using all the clues. You may want to have a group of adults test out the escape room to look for any potential issues before your students go through.

# 1 Corinthians 13:1-13

**1**

ABC

**2**

DEF

**3**

GHI

**4**

JKL

**5**

MNO

**6**

PQRS

**7**

TUV

**8**

WXYZ

**9**

**\***

**0**

**#**

**John 8:12**

**Isaiah 7:14**

**Luke 1:31-38**

**Matthew 2:13-15**

**Luke 3:21-22**

**Proverbs 2:6**

**John 8:12**

**Isaiah 7:14**

**Luke 1:31-38**

**Matthew 2:13-15**

**Luke 3:21-22**

**Proverbs 2:6**

**John 8:12**

**Isaiah 7:14**

**Luke 1:31-38**

**Matthew 2:13-15**

**Luke 3:21-22**

**Proverbs 2:6**

**John 8:12**

**Isaiah 7:14**

**Luke 1:31-38**

**Matthew 2:13-15**

**Luke 3:21-22**

**Proverbs 2:6**

## Epiphany Gifts

Epiphany is observed on January 6, twelve days after Christmas, to remember the kings who came to worship King Jesus and who brought him three gifts\*—gold, frankincense, and myrrh—following his divine birth.

### **Read Matthew 2:1-12** *The Visit of the Magi.*\*

When Jesus was born in Bethlehem of Judea, in the days of King Herod, behold, magi from the east arrived in Jerusalem, saying, “Where is the newborn king of the Jews? We saw his star at its rising and have come to do him homage.”

When King Herod heard this, he was greatly troubled, and all Jerusalem with him. Assembling all the chief priests and the scribes of the people, he inquired of them where the Messiah was to be born. They said to him, “In Bethlehem of Judea, for thus it has been written through the prophet: ‘And you, Bethlehem, land of Judah, are by no means least among the rulers of Judah; since from you shall come a ruler, who is to shepherd my people Israel.’”

Then Herod called the magi secretly and ascertained from them the time of the star’s appearance. He sent them to Bethlehem and said, “Go and search diligently for the child. When you have found him, bring me word, that I too may go and do him homage.” After their audience with the king they set out. And behold, the star that they had seen at its rising preceded them, until it came and stopped over the place where the child was. They were overjoyed at seeing the star, and on entering the house they saw the child with Mary his mother. They prostrated themselves and did him homage. Then they opened their treasures and offered him gifts of gold, frankincense, and myrrh. And having been warned in a dream not to return to Herod, they departed for their country by another way.

The magi were looking for King Jesus to bring him gifts to worship him. They were willing to risk their own lives in order to honor Jesus.

### **Read Romans 12:1-2** *Sacrifice of Body and Mind.*

I urge you therefore, brothers, by the mercies of God, to offer your bodies as a living sacrifice, holy and pleasing to God, your spiritual worship. Do not conform yourselves to this age but be transformed by the renewal of your mind, that you may discern what is the will of God, what is good and pleasing and perfect.

**Discuss:** Before Jesus came to earth, people's sins were forgiven through animal sacrifices. But now, because of Jesus' death on the cross, we don't have to kill animals to be forgiven. In the passage that we just read it says we are to offer ourselves as living sacrifices (as opposed to dead animal sacrifices). What do you think this means? (Being a living sacrifice involves giving your entire life—your heart, your mind, and your willpower—to God. To be a living sacrifice means obedient service to God. The Bible says it is our reasonable service. It is reasonable, sensible, intelligent—because of what Jesus has done for us.)



As we celebrate the New Year, let us ask ourselves, "What gifts will I bring to King Jesus this year?"

**Will you give Jesus your heart?** (If you've never done so, you can do it right now by admitting that you have sinned and need Jesus to save you and forgive you.)

**Will you give Jesus your mind?** (You can do so by reading his word everyday and thinking about those things that please God.)

**Will you give Jesus your willpower?** (You can do so by asking him to transform your will to be like his.)

**Will you give Jesus your treasures?** (You can do so by giving your gifts of money and talent to furthering his kingdom!)

According to Romans 12, a follower of Jesus Christ should be able to answer this question: How will I serve others in the name of Jesus Christ this coming new year?

**What You Do:** Give each student a slip of paper which says "Because Jesus is the King of my life, I will\_\_\_\_\_". Tell them to prayerfully think about what they can bring to King Jesus this year. Give them a few minutes to pray and deliberate over their "gift". Then have the students fill in the blank on the slips of paper. (For example, "Because Jesus is the King of my life, I will show kindness to my enemies." or, "Because Jesus is the King of my life, I will spend more time reading his word.")

**Make Epiphany Boxes to store the prayers.**

**Have the students** put their "gifts" in the box and wrap them with the wrapping paper. There are gift tags to attach to their gifts.

**Say:** Place the prayers into the box and store it in a prominent place in your bedroom to remember the gift that you will bring to Jesus this year.

My Gift to You!

Because Jesus is the King of my life, I will \_\_\_\_\_  
\_\_\_\_\_  
\_\_\_\_\_

My Gift to You!

Because Jesus is the King of my life, I will \_\_\_\_\_  
\_\_\_\_\_  
\_\_\_\_\_

My Gift to You!

Because Jesus is the King of my life, I will \_\_\_\_\_  
\_\_\_\_\_  
\_\_\_\_\_

My Gift to You!

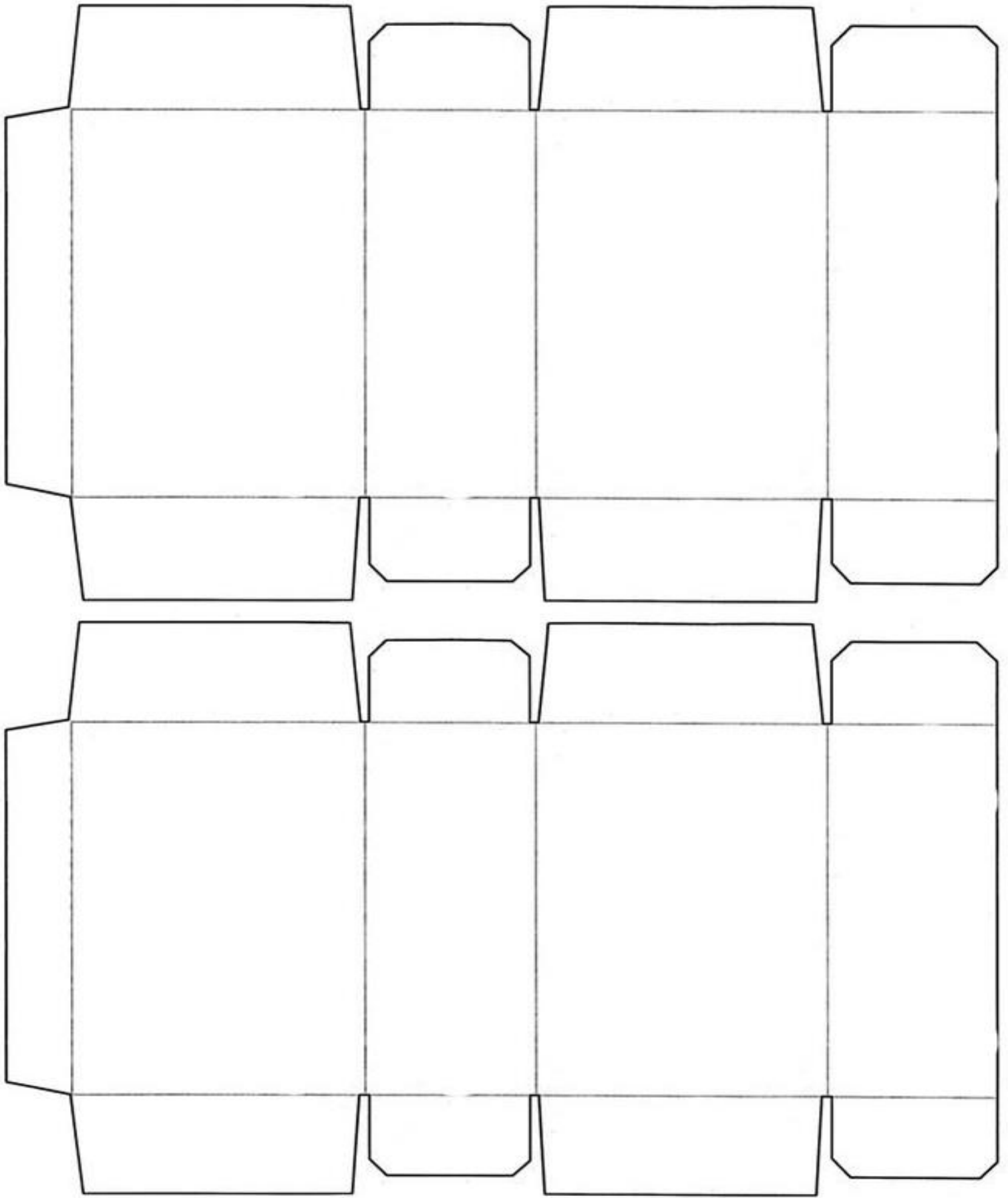
Because Jesus is the King of my life, I will \_\_\_\_\_  
\_\_\_\_\_  
\_\_\_\_\_

My Gift to You!

Because Jesus is the King of my life, I will \_\_\_\_\_  
\_\_\_\_\_  
\_\_\_\_\_

My Gift to You!

Because Jesus is the King of my life, I will \_\_\_\_\_  
\_\_\_\_\_  
\_\_\_\_\_







**When Jesus was born in Bethlehem of Judea, in the days of King Herod,\* behold, magi from the east arrived in Jerusalem, saying, "Where is the newborn king of the Jews? We saw his \_\_\_\_\_ at its rising and have come to do him homage."**

**Matthew 2:1-2**

